

WEHLNER SONNENUHR RIESLING SPÄTLESE

GRAND CRU VINEYARD, GREAT GROWTH, "PRÄDIKAT" WINE



SPÄTLESE GRAPES

SPÄTLESE

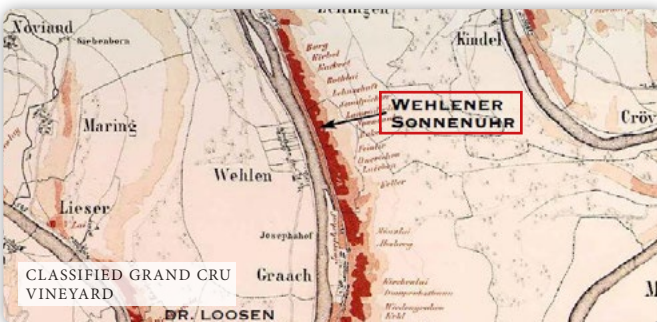
Spätlese is German for "late picked." It has more richness and body than Kabinett because the grapes are allowed to ripen for an extra week or more. The extra hang time on the vine allows for greater development of flavor and aroma.



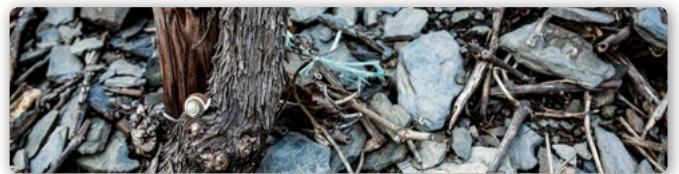
WEHLNER SONNENUHR

[vay-len-er zon-en-ooer] (*The Sundial of Wehlen*)

This precipitously steep and rocky vineyard yields some of the most elegant and sophisticated white wines in the world. It has very light soil and the purest blue slate of any Mosel vineyard. This gives the wine a lively minerality and a delicate, crisp acidity that perfectly balances the bright flavors of white peach and lemon.



CLASSIFIED GRAND CRU VINEYARD



WEHLEN SLATE

The soil in Wehlen is composed of broken and weathered shards of the purest blue slate in the Mosel valley. This purity is reflected in the wines.



THE DR. LOOSEN ESTATE, BERNKASTEL / MOSEL

[91] MOSEL FINE WINES, 2015 VINTAGE

This offers a rather elegant nose of pear, white minerals and flowers. The wine is delicately creamy on the palate, with more minerals and a touch of sweetness still in need of integration. The finish proves however nicely vibrant and juicy. 2025-2040